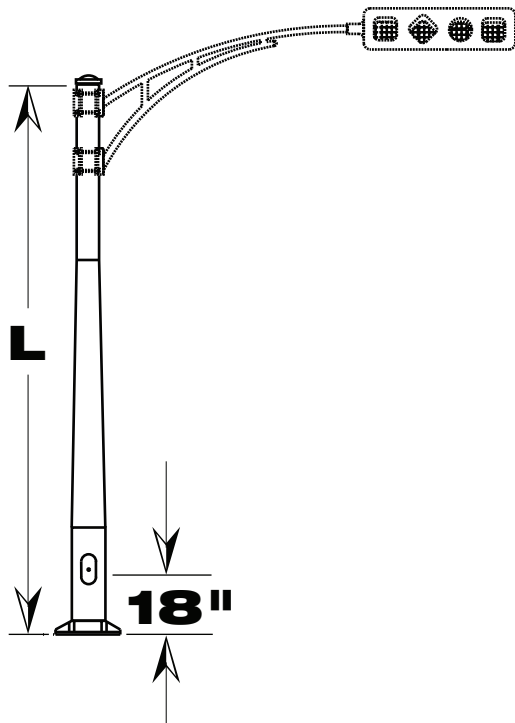


Traffic Truss Arm Poles



APPLICATION

Traffic truss arm "TTP" poles are for use with side-mounted traffic truss arms (TTA). For information regarding TTA arms, refer to p.16.

SPECIFICATIONS

The pole shaft will be tapered from a 6063 aluminum alloy tube and shall be heat treated to T6 after welding.

EQUIPMENT

Poles are supplied complete with grounding lug, 4" x 7" hand hole and cover, four shims, four anchor bolt snap-on bolt covers and one pole cap.

The anchor bolt kit which includes one foundation template*, four anchor bolts, eight washers and eight nuts is to be ordered separately and can be pre-shipped by indicating this requirement on the order. *NOTE: On large orders one template is supplied for every five poles ordered.

Wiring hole(s) for the arm(s) mounting must be provided by the customer to match the TTA arm mounting positions.

FINISH

Standard finish is rotary polished aluminum. Painted and anodized finishes are also available. Consult your representative for details.

ORDERING INFORMATION

T T P 1 9 - 1 0 6 6 E - A B

①
②
③
④
⑤
⑥
⑦

1- Pole Style

TTP = TRAFFIC TRUSS

2- Mounting Height

13 = 13'
 15 = 15'
 17 = 17'
 19 = 19'

3- Bottom Diameter

8 = 8"
 10 = 10"

4- Top Diameter

66 = 6 5/8"

5- Thickness

C = .188"
 E = .250"

6- Color Option

- = POLISHED
 1 = BLACK
 2 = LIGHT GREY
 3 = BRONZE
 7 = WHITE

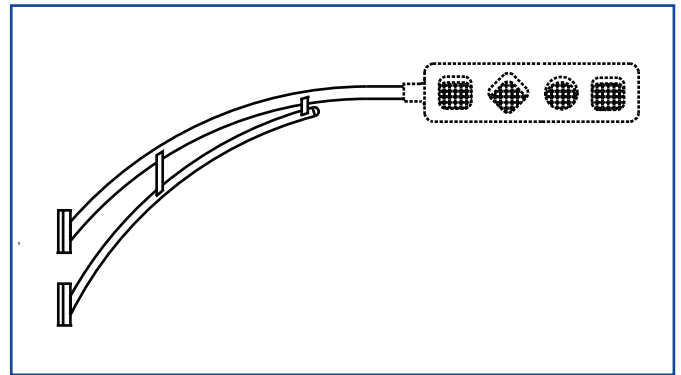
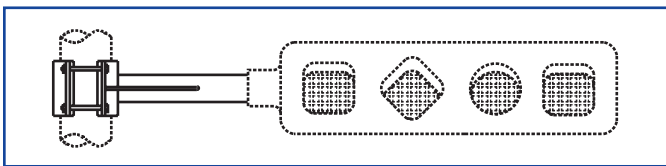
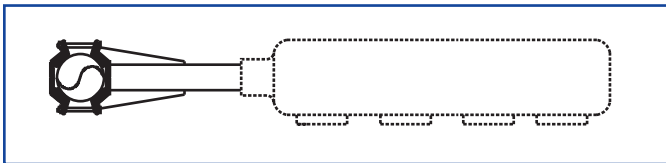
7- Base Type

AB = ANCHOR BOLT BASE

POLE SPECIFICATION GUIDE

Length	CATALOG NUMBER	TAPER	WALL	ANCHOR BASE DETAIL					
L Feet		Inches	Inches	CATALOG NUMBER	A Inches	BC Inches	S In.	Bolts Inches	E Inches
13	TTP13-866C-AB	8 - 6 ⁵ / ₈	0.188	ABK115-1	8 ¹ / ₈	11 - 12	12	1 x 30	2 ³ / ₄
	TTP13-866E-AB	8 - 6 ⁵ / ₈	0.250						
15	TTP15-866C-AB	8 - 6 ⁵ / ₈	0.188	ABK115-1	8 ¹ / ₈	11 - 12	12	1 x 30	2 ³ / ₄
	TTP15-866E-AB	8 - 6 ⁵ / ₈	0.250	ABK115-1	8 ¹ / ₈	11 - 12	12	1 x 30	2 ³ / ₄
	TTP15-1066C-AB	10 - 6 ⁵ / ₈	0.188	ABK15-1	9 ⁷ / ₈	13 - 15	13	1 x 30	3
	TTP15-1066E-AB	10 - 6 ⁵ / ₈	0.250	ABK15-125	9 ⁷ / ₈	13 - 15	13	1 ¹ / ₄ x 48	3
17	TTP17-866C-AB	8 - 6 ⁵ / ₈	0.188	ABK115-1	8 ¹ / ₈	11 - 12	12	1 x 30	2 ³ / ₄
	TTP17-866E-AB	8 - 6 ⁵ / ₈	0.250	ABK115-1	8 ¹ / ₈	11 - 12	12	1 x 30	2 ³ / ₄
	TTP17-1066C-AB	10 - 6 ⁵ / ₈	0.188	ABK15-1	9 ⁷ / ₈	13 - 15	13	1 x 30	3
	TTP17-1066E-AB	10 - 6 ⁵ / ₈	0.250	ABK15-125	9 ⁷ / ₈	13 - 15	13	1 ¹ / ₄ x 48	3
19	TTP19-866C-AB	8 - 6 ⁵ / ₈	0.188	ABK115-1	8 ¹ / ₈	11 - 12	12	1 x 30	2 ³ / ₄
	TTP19-866E-AB	8 - 6 ⁵ / ₈	0.250	ABK115-1	8 ¹ / ₈	11 - 12	12	1 x 30	2 ³ / ₄
	TTP19-1066C-AB	10 - 6 ⁵ / ₈	0.188	ABK15-1	9 ⁷ / ₈	13 - 15	13	1 x 30	3
	TTP19-1066E-AB	10 - 6 ⁵ / ₈	0.250	ABK15-125	9 ⁷ / ₈	13 - 15	13	1 ¹ / ₄ x 48	3

Traffic Truss Arm(s)



For complete details regarding Traffic Truss Arms, refer to p.16.

