

V Series

Single Member Arm



• Equipment and Specifications

The "V" series includes 4', 6', 8', 10', 12' or 15 luminaire arm(s), anchor bolts, anchor base, hand hole with cover and plastic anchor nut covers. All EPA calculations conform to AASHTO 2001 design criteria. Weights do not include the anchor bolts.

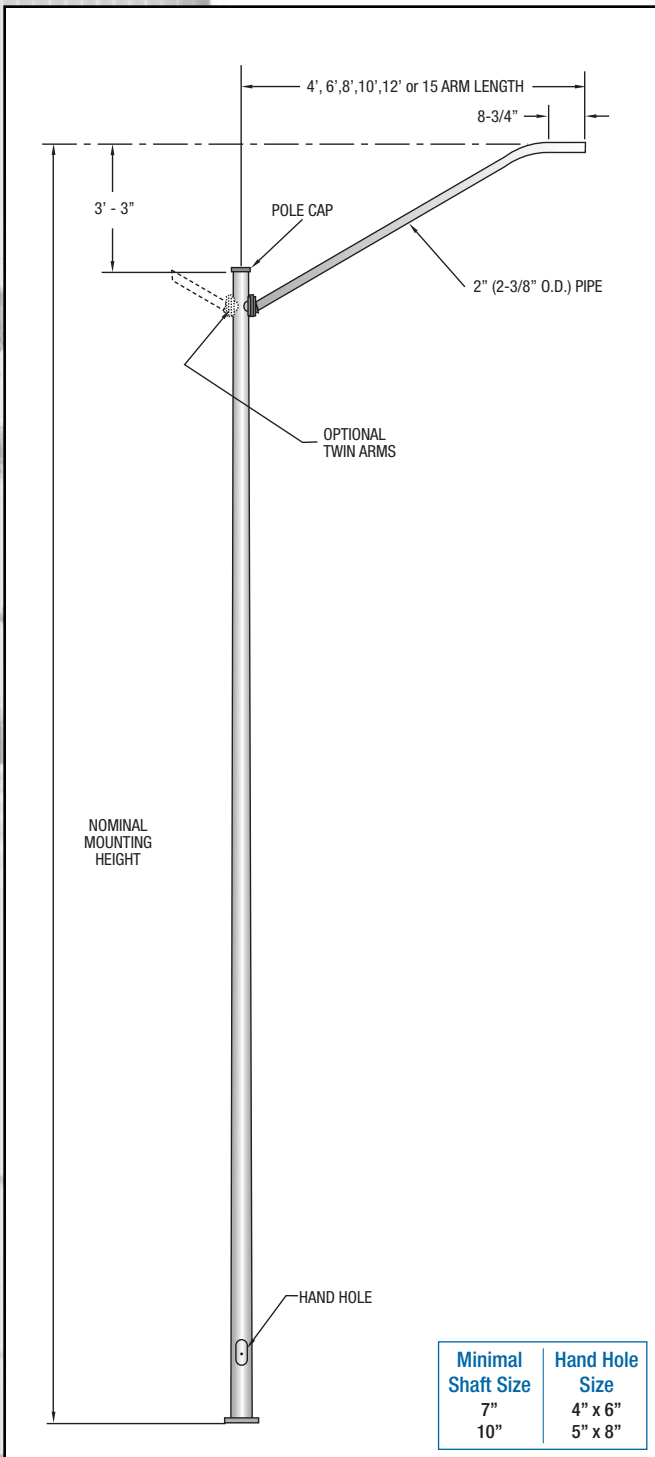
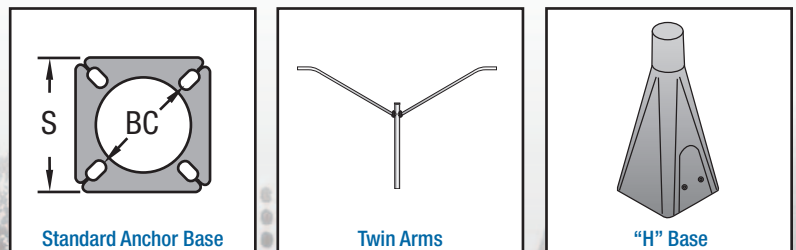
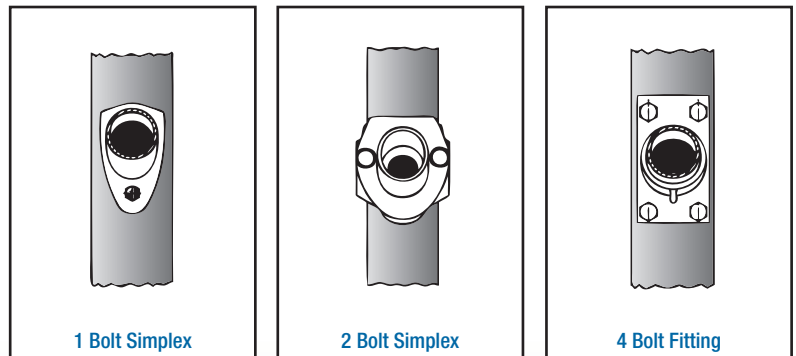
• Finish

Standard finish is hot dipped galvanized as per ASTM123 standards, optional coatings include Ultrabond II paint finish or Ultrabond II paint on galvanized finish. The Ultrabond II paint finish is a very high corrosion resistant finish that offers three times greater resistance to corrosion than traditional powder coat paint. The finish also features a high impact surface, excellent graffiti resistance and can be field repaired to factory specifications with only a paint brush.

• Options

- Aluminum breakaway bases in 9", 17" or 20"
- Breakaway couplings
- Full base covers
- Receptacle outlet
- Refer to the accessories section for further options

• Arm Attachments



Ordering Information

R	V	H	2	-	30	-	10	1	-	AB	GV
1	2	3	4		5		6	7		8	9

1 SHAFT SHAPE

R = Round
O = Octagonal
S = 16 sided

2 SERIES

V = "V" Series

3 SHAFT STRENGTH

Blank = Standard Duty
H = Heavy Duty (includes "H" Base)

4 ARM TYPE

1 = 1 Bolt Simplex
2 = 2 Bolt Simplex
4 = 4 Bolt Fitting

5 MOUNTING HEIGHT

20 = 20'
25 = 25'
30 = 30'
35 = 35'
40 = 40'
50 = 50'

6 ARM LENGTH

4 = 4' 10 = 10'
6 = 6' 12 = 12'
8 = 8' 15 = 15'

7 # OF ARMS

1 = Single
2 = Double

8 BASE TYPE

AB = Anchor Base Plate
HB = Enclosed "H" Base
DB = Direct Burial

9 FINISH OPTIONS

GV = Galvanized BK = Black
SW = Self Weathering BZ = Bronze
SS = Stainless Steel WH = White
(Consult Factory for EPA) XX = Special Color (Specify)

Selection Guide

Octagonal Tapered Shaft

Catalogue Number	Nominal Mounting Height feet	Pole Size				Anchor Base Detail				Pole Weight Approx. lbs	E.P.A.		
		Base O.D. feet	Top O.D. inch	Tenon O.D. inch	Max Arm Length feet	BC inch	S inch	A/Bolts inch	Thickness inch		90 MPH	100 MPH	110 MPH
RV2-20-XXX-AB-XX	20	6.27	3.92	2-3/8	8	9-1/2	10	1 x 40	3/4	154	8.4	5.3	3.5
RVH2-25-XXX-AB-XX	25	6.94	3.89	2-3/8	8	10	10-1/2	1 x 40	3/4	196	8.0	5.0	3.3
RV2-30-XXX-AB-XX	30	7.57	3.81	2-3/8	8	10-1/2	11	1 x 40	3/4	240	7.6	4.8	3.1
RVH2-35-XXX-AB-XX	35	8.4	3.95	2-3/8	8	11-1/2	12	1 x 40 HS	1	304	7.4	4.6	3.0
RV2-40-XXX-AB-XX	40	9.22	4.07	2-3/8	8	12	12	1 x 40 HS	1	365	7.1	4.4	2.9
RVH2-50-XXX-AB-XX	50	10.4	3.85	2-3/8	8	13-1/2	14	1 x 40 HS	1	483	6.8	3.7	1.3

Octagonal Tapered Shaft

Catalogue Number	Nominal Mounting Height feet	Pole Size				Anchor Base Detail				Pole Weight Approx. lbs	E.P.A.		
		Base O.D. feet	Top O.D. inch	Tenon O.D. inch	Max Arm Length feet	BC inch	S inch	A/Bolts inch	Thickness inch		90 MPH	100 MPH	110 MPH
OV2-20-XXX-AB-XX	20	7	4	2-3/8	8	9-1/2	10-3/4	1 x 40	3/4	162	8.4	5.3	3.5
OVH2-20-XXX-HB-XX	20	7	4	2-3/8	8	15	15-1/2	1 x 40	3/4	191	8.4	5.3	3.5
OV2-25-XXX-AB-XX	25	7	4	2-3/8	8	9-1/2	10-3/4	1 x 40	3/4	195	8.0	5.0	2.6
OVH2-25-XXX-HB-XX	25	7	4	2-3/8	8	15	15-1/2	1 x 40	3/4	225	8.0	5.0	3.3
OV2-30-XXX-AB-XX	30	8.6	4	2-3/8	8	11	10-3/4	1 x 40	3/4	255	7.6	3.7	-
OVH2-30-XXX-HB-XX	30	8.6	4	2-3/8	8	15	15-1/2	1 x 40	3/4	291	7.6	4.8	3.1
OV2-35-XXX-AB-XX	35	8.6	4	2-3/8	8	11	11-5/8	1 x 40 HS	1	299	7.4	4.6	1.7
OVH2-35-XXX-HB-XX	35	8.6	4	2-3/8	8	15	15-1/2	1 x 40 HS	1	329	7.4	4.6	3.0
OV2-40-XXX-AB-XX	40	9.6	4	2-3/8	8	12	12-3/4	1 x 40 HS	1	364	7.1	3.2	-
OVH2-40-XXX-HB-XX	40	9.6	4	2-3/8	8	15	15-1/2	1 x 40 HS	1	397	7.1	4.4	1.9
OV2-50-XXX-AB-XX	50	10.6	4	2-3/8	8	13-1/2	14-1/2	1-1/4 x 48 HS	1-1/4	494	6.8	3.6	-
OVH2-50-XXX-HB-XX	50	10.6	4	2-3/8	8	15	15-1/2	1-1/4 x 48 HS	1-1/4	523	6.8	4.2	-

XX = Replace by ARM and FINISH selection.

NOTE: All EPA calculations are for SINGLE arm, consult factory for double arm EPA's
NOTE: Poles are available with 10', 12' and 15' arms, please consult factory for EPA