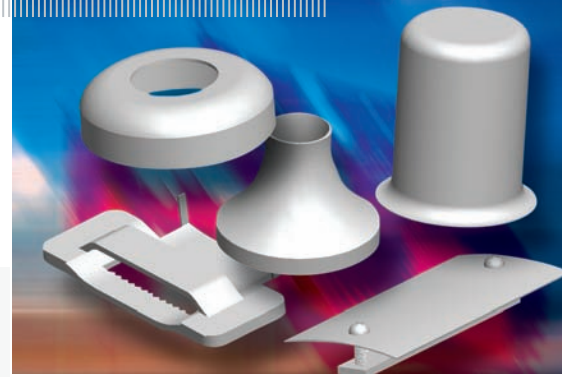


**ISO 9001-2000**  
Registered Quality System



## ORDERING INFORMATION

**B**      **2** -      **4**      **5**  
 ①                      ②                      ③

### 1- Pole Style

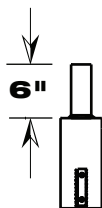
**B** = BULLHORN ARM

### 2- Tenons and Orientation

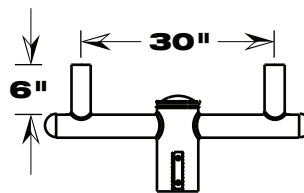
- 2- = 2 TENONS 30" APART
- 3- = 3 TENONS 30" APART IN LINE
- 4- = 4 TENONS 30" APART IN LINE
- 3Y = 3 TENONS SPACED 120 DG APART
- 4X = 4 TENONS SPACED 90 DG APART

### 3- Pole Size Diameter

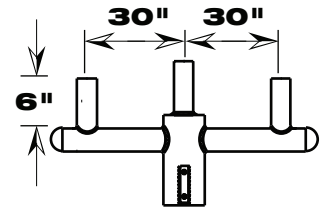
- 30 = 3.0"
- 35 = 3.5"
- 45 = 4.5"
- 55 = 5.5"



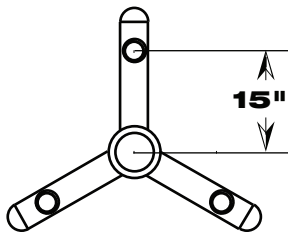
**B1-XX**



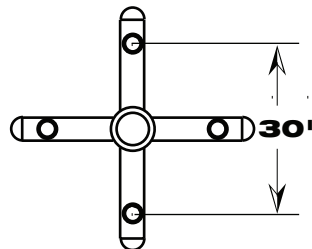
**EPA: 1.06 ft°**  
**B2-XX**



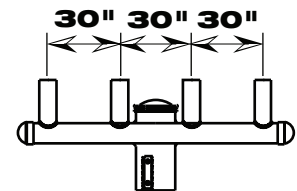
**EPA: 1.16 ft°**  
**B3-XX**



**EPA: 0.94 ft°**  
**B3Y-XX**



**PA: 1.24 ft°**  
**B4X-XX**



**PA: 3.05 ft°**  
**B4-XX**