

# Pole Caps, Handhole Covers, Base Covers

**ISO 9001-2000**  
Registered Quality System



## POLE CAPS



CAP SIZE	Aluminum Casting	Spun Aluminum
2.875"	06247	-
3"	-	05873
3.5"	-	24350
4"	03382	24260
4.5"	24430	24620
5"	22475	-
5.5"	22476	-
6"	04342	08007
6.625"	22478	-
7"	-	22477
8"	22479	-

## HAND HOLE COVERS



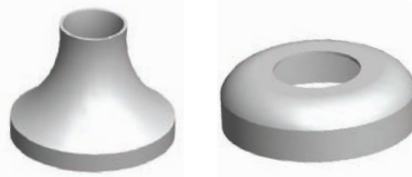
Diameter of Pole	Type of Pole	Part Number
4"	Round	24511
5"-6"	Round	01410
7"-8"-10"	Round	06051
All Size	Square	22525

## Snap Bolt Covers



Part Number	Bolt Size
06523	1"
06522	1 1/4"

## Spun Aluminum Base Covers



4"

5" and 6"

Part Number	Pole Diameter
05951	4"
07575MAC	5"
07546MAC	6"

## Leveling Shims



Part Number	Pole Diameter
20590	f"
20230	1"
20580	1 1/4"